

H8 1017

3.20-2025



Game and Fish



**2025-27 Appropriation Request
North Dakota Game and Fish Department Potential Land Acquisitions**

As of January 6, 2025

The Department has been contacted by individuals with the following tracts. They are interested in selling these tracts to the Department to be maintained as Wildlife Management Areas (WMA). Some opportunities may arise throughout the biennium that could get higher priority. The following list is in no particular order.

- 1) Adams County – 480 acres – Land is currently in CRP.
- 2) Burleigh County – 640 acres – Property is wetlands with a small area grass.
- 3) Dunn County – 960 acres – Native prairie and woodlands near Killdeer WMA.
- 4) Eddy County – 280 acres – Grassland and wetlands.
- 5) Hettinger County – 80 acres – Land is currently in CRP.
- 6) Lamoure County – 476 acres – Land is enrolled in WRE, so no agricultural practices allowed. Wetlands and grasslands.
- 7) McLean County – 30 acres – Addition to the Coal Lake WMA for improved access.
- 8) Pembina County – 593 acres – Dunklee WMA addition. Enrolled in NRCS Emergency Watershed Protection, so no agricultural practices are allowed.
- 9) Sheridan County- 3,106 acres – Mix of native prairie, grasslands, wetlands, and crop land.
- 10) Steele County – 160 acres - Trees and wetlands adjacent to Waterfowl Production Area.
- 11) Walsh County – 542 acres - Land is enrolled in WRE, so no agricultural practices allowed. Wetlands and grasslands.

A map for each potential acquisition is included.

**Adams County
480 Acres**



Map Legend



Potential Land Acquisition

**2023 Aerial Photo*

**Burleigh County
640 Acres**



Map Legend



Wildlife Management Area



Waterfowl Production Area



Potential Land Acquisition

**2023 Aerial Photo*

**Dunn County
960 Acres**



Map Legend



State Trust Lands



National Grasslands



Potential Land Acquisition

**2023 Aerial Photo*

**Eddy County
280 Acres**



Map Legend

-  US Fish and Wildlife WPA
-  Potential Land Acquisition

*2023 Aerial Photo

**Hettinger County
80 Acres**



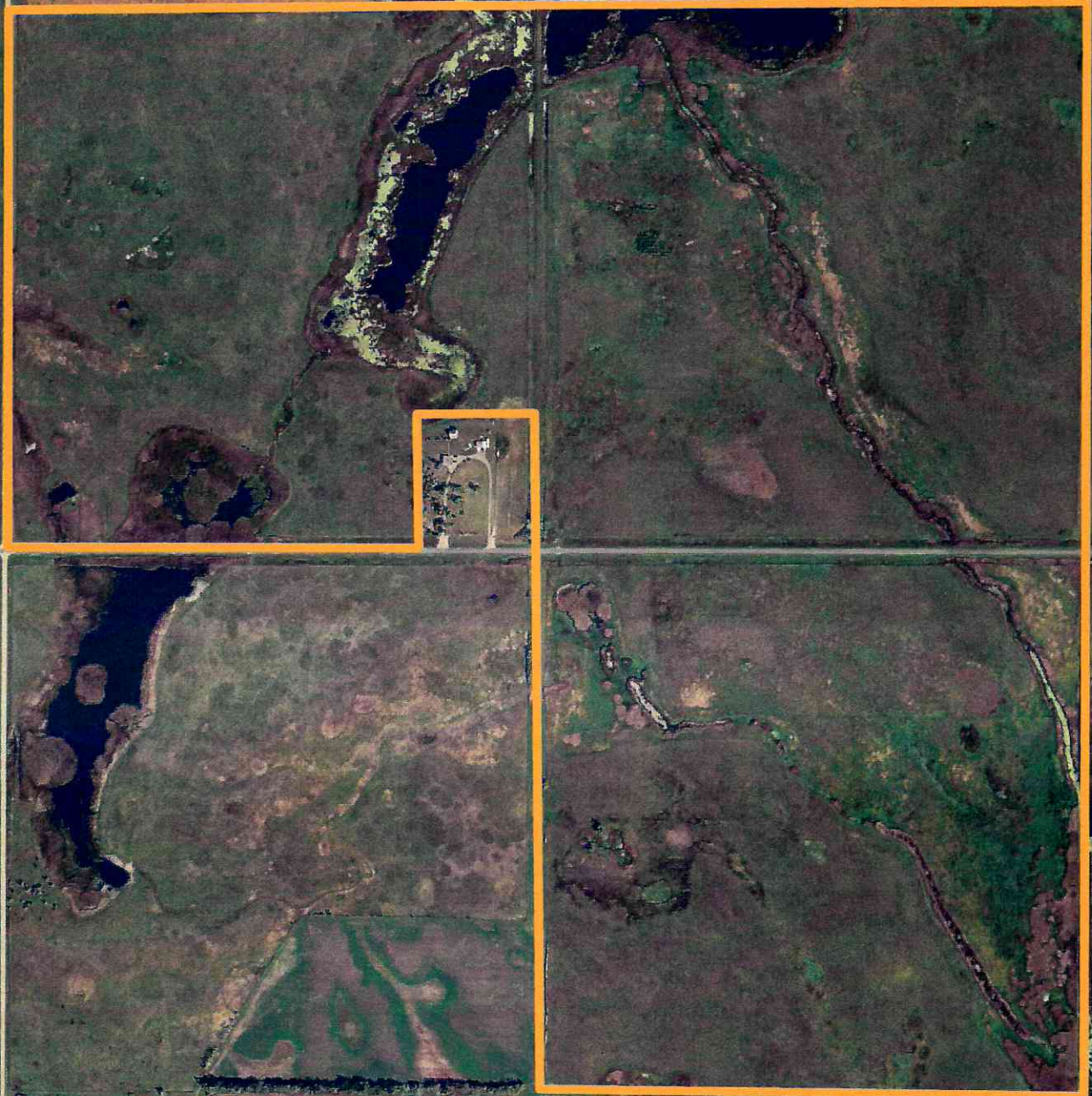
Map Legend



Potential Land Acquisition

**2023 Aerial Photo*

**Lamoure County
476 Acres**



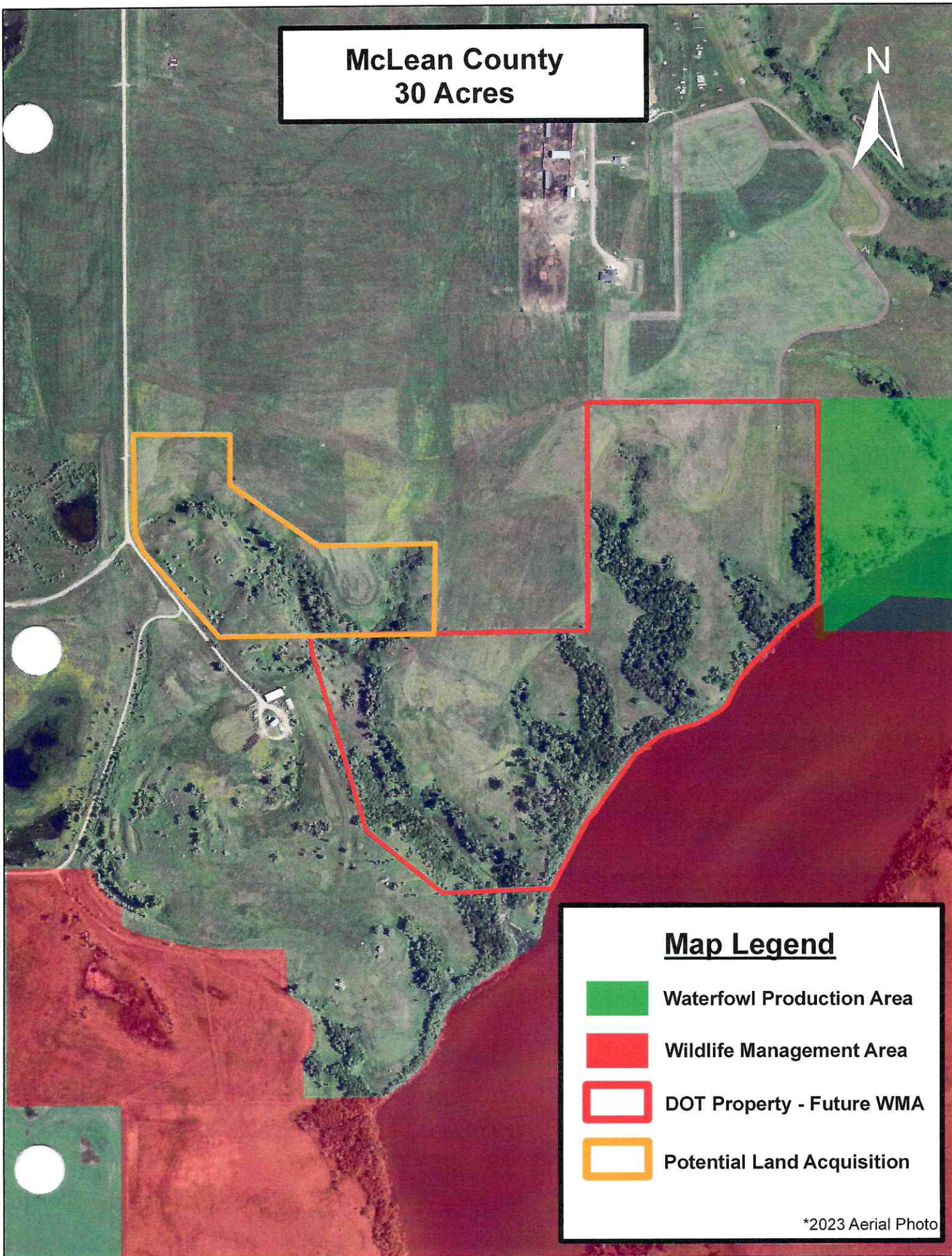
Map Legend



Potential Land Acquisition

*2023 Aerial Photo

**McLean County
30 Acres**



*2023 Aerial Photo

**Pembina County
593 Acres**



Map Legend



Wildlife Management Area



Potential Land Acquisition

**2023 Aerial Photo*

**Sheridan County
3106 Acres**



Map Legend



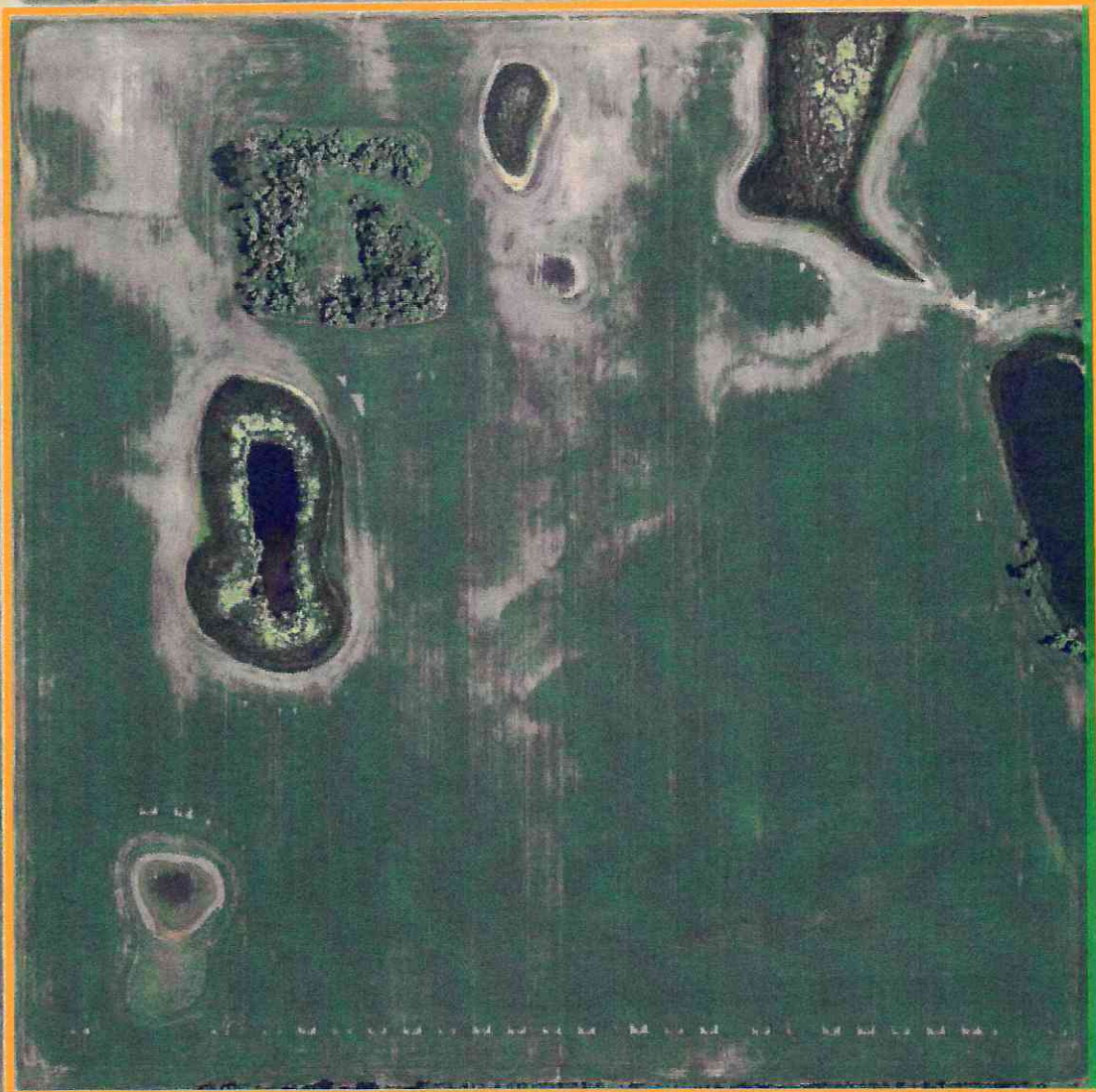
State Trust Lands



Potential Land Acquisition

**2023 Aerial Photo*

**Steele County
160 Acres**



Map Legend

-  Waterfowl Production Area
-  Wildlife Management Area
-  Potential Land Acquisition

*2023 Aerial Photo

**Walsh County
542 Acres**



Map Legend



State Trust Lands



Potential Land Acquisition

*2023 Aerial Photo