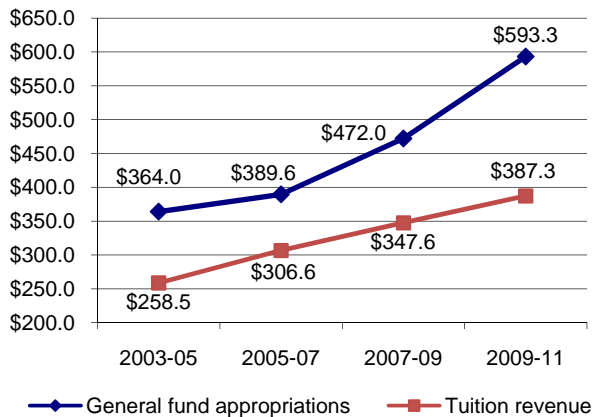
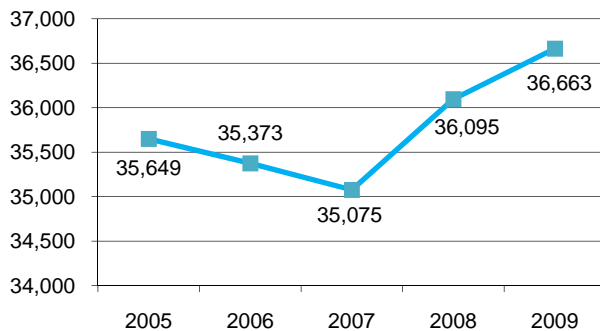


### HIGHER EDUCATION - GENERAL FUND APPROPRIATIONS AND TUITION REVENUE (Amounts Shown in Millions)



### NORTH DAKOTA UNIVERSITY SYSTEM FTE STUDENT ENROLLMENT



### FTE STUDENT ENROLLMENT BY INSTITUTION

Institution	Fall 2007 Actual	Fall 2008 Actual	Fall 2009 Estimated
Bismarck State College	2,792	2,937	3,020
Dakota College at Bottineau	402	440	450
Dickinson State University	2,158	2,294	2,293
Lake Region State College	764	784	750
Mayville State University	586	563	573
Minot State University	2,730	2,720	3,074
North Dakota State University	11,221	11,794	11,900
State College of Science	2,097	2,041	1,967
University of North Dakota	10,967	11,137	11,264
Valley City State University	807	823	830
Williston State College	551	562	542
<b>Total</b>	<b>35,075</b>	<b>36,095</b>	<b>36,663</b>

## HIGHER EDUCATION TUITION RATES

The 2009 Legislative Assembly provided that tuition at campuses may not increase by more than 4 percent annually during the 2009-11 biennium unless the State Board of Higher Education receives Budget Section approval. The following is information regarding resident student tuition rates for various programs:

### Resident Student - Undergraduate Programs

	2008-09	2009-10
Bismarck State College	\$3,364	\$3,364
Dakota College at Bottineau	\$3,120	\$3,120
Dickinson State University	\$4,019	\$4,160
Lake Region State College	\$3,065	\$3,065
Mayville State University	\$3,985	\$4,124
Minot State University	\$4,179	\$4,325
State College of Science	\$3,368	\$3,368
North Dakota State University	\$5,264	\$5,448
University of North Dakota	\$5,276	\$5,461
Valley City State University	\$4,138	\$4,283
Williston State College	\$2,618	\$2,618

### Resident Student - Graduate Programs

	2008-09	2009-10
Minot State University	\$5,527	\$5,720
North Dakota State University	\$5,645	\$5,843
University of North Dakota	\$5,675	\$5,874
Valley City State University	\$5,505	\$5,698

### Resident Student - Professional Programs

	2008-09	2009-10
University of North Dakota law school	\$6,372	\$6,596
University of North Dakota medical school	\$22,515	\$23,303
University of North Dakota physical therapy	\$10,406	\$10,770

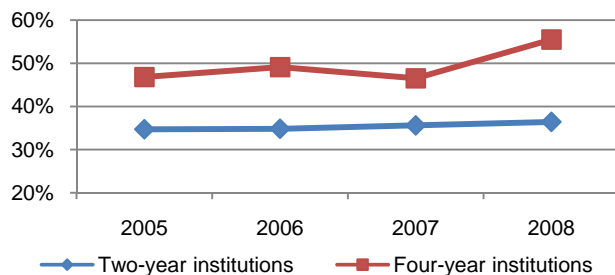
### Tuition and Fees as a Percentage of Median Household Income

	2003-04	2005-06	2007-08
Doctoral institutions			
North Dakota average	11.3%	13.5%	14.7%
National average	12.4%	13.9%	14.6%
Four-year institutions			
North Dakota average	8.7%	10.4%	11.4%
National average	9.9%	11.0%	11.5%
Two-year institutions			
North Dakota average	7.0%	8.2%	8.8%
National average	5.1%	5.6%	5.7%

## HIGHER EDUCATION PERFORMANCE MEASURES

The following are selected higher education performance measures as reported in the *North Dakota University System Accountability Reports*:

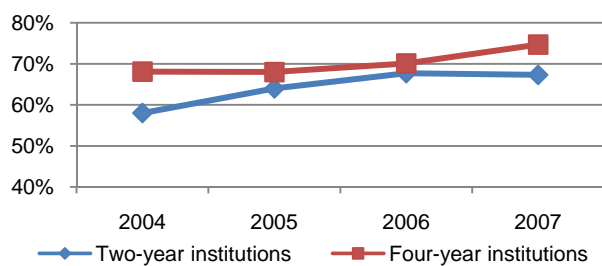
**Student Graduation Rates<sup>1</sup>**



	2005	2006	2007	2008	National Average - 2008
Two-year institutions	34.7%	34.8%	35.6%	36.4%	30.9%
Four-year institutions	46.8%	49.1%	46.5%	55.5%	56.0%

<sup>1</sup>Based on two-year institution students who entered college and graduated within three years and on four-year institution students who entered college and graduated within six years.

**Freshman Retention Rates<sup>1</sup>**



	2004	2005	2006	2007	National Average - 2007
Two-year institutions	58.0%	64.0%	67.7%	67.3%	51.8%
Four-year institutions	68.1%	68.0%	70.1%	74.7%	76.5%

<sup>1</sup>Based on the number of freshman students who enrolled in an institution and reenrolled at the same institution the following year.

**Employer Satisfaction Survey of Employees  
That Are Recent University System Graduates<sup>1</sup>**

Survey Question	2006	2008
Satisfaction with qualities expected from a college graduate	4.23	4.16
Satisfaction with employee's general skills	4.11	4.13
Satisfaction with employee's specialized skills	3.87	3.88
Likelihood of hiring other graduates of the same institution	4.15	4.17

<sup>1</sup>Survey respondents used the following scale to rate their satisfaction in each area: 5 = Extremely; 4 = Very; 3 = Somewhat; 2 = Not very; 1 = Not at all.

**Performance on National Examinations -  
Average Pass Rates**

	2003-04	2005-06	2007-08	2007-08 National Average
Pharmacy technician	100.0%	100.0%	97.1%	69.9%
Culinary arts	100.0%	80.0%	65.0%	87.0%
National Occupational Testing Competency Institute (NOCTI) - Auto body	75.4%	67.0%	72.7%	67.6%
NOCTI - Business management	77.9%	75.0%	78.1%	75.7%
Physical therapy assistant	100.0%	100.0%	67.0%	69.0%
Veterinary technician	63.6%	68.0%	78.6%	64.3%

**NORTH DAKOTA UNIVERSITY SYSTEM  
RESEARCH EXPENDITURES  
(Amounts Shown in Millions)**

