



**NORTH DAKOTA**

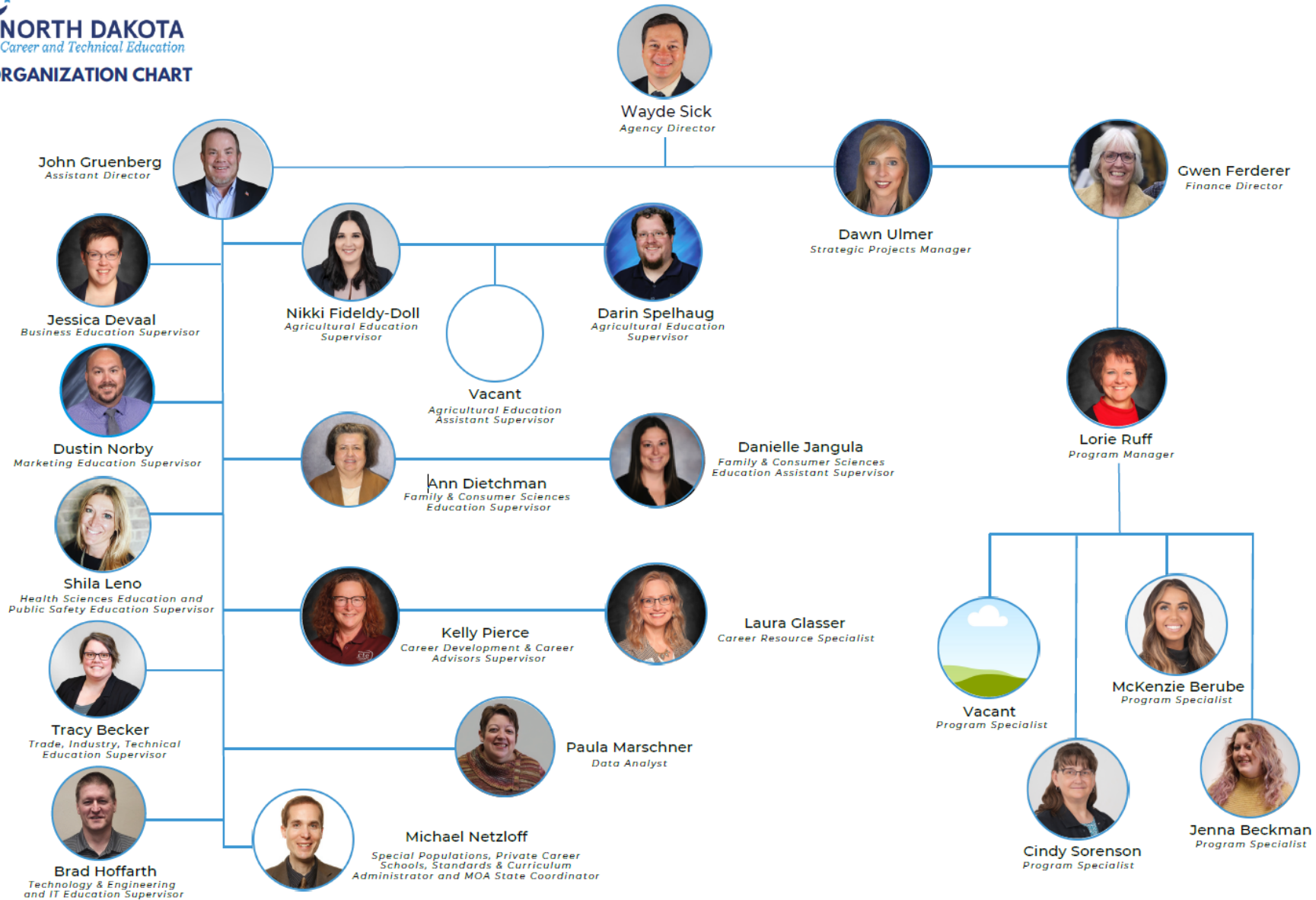
*Career and Technical Education*

*Preparing Tomorrow's Workforce*

# **North Dakota Career and Technical Education**

---

# NDCTE Organizational Chart



# NDCTE 2025-27 Budget Status

<b>Budget Line Items</b>	<b>2025-27 Budget</b>	<b>Spend to Date</b>
Secondary Grants (General Fund)	\$52,037,780	\$6,707,128.81
Grants – Federal (Perkins)	\$14,007,349	\$18,265.01
STEM Initiative (General Fund)	\$100,000	\$0
Workforce Training (General Fund)	\$3,500,000	\$0
Marketplace for Kids (General Fund)	\$400,000	\$47,155.86
Area CTE Center Grant (CCPF)	\$5,460,835	\$3,840,627.48
Virtual Reality Career Exploration (SIIF)	\$1,000,000	\$900,610
Autonomous Technology Grant (SIIF)	\$250,000	\$0
<b>Total Funds</b>	<b>\$75,505,964</b>	<b>\$11,513,787.16</b>

# NDCTE 2025-27– Programs

## **Grants – Federal (Perkins V)**

Funds to develop, coordinate, implement, or improve career and technical education programs to meet the needs identified in the Comprehensive Local Needs Assessment (CLNA).

## **STEM Initiative**

To encourage education entities and business/industry partners to participate in STEM activities/projects for K-12 students, providing greater opportunities for rural and tribal communities. Currently complete this through STEM Day Grants. The STEM Ecosystem Board is reviewing options on how to make a greater impact.

# NDCTE 2025-27– Programs

## **Workforce Training – TrainND**

TrainND provides results-driven, non-credit training that helps businesses close skill gaps and helps individuals move their careers forward.

Additional dollars were provided to support a sales staff in an underserved area of each region. To date, only one sales staff has been hired (Southeast)

## **Marketplace for Kids**

To encourage youth to explore entrepreneurship and self-employment through the recognition and development of their inventive, creative thinking and problem-solving skills. This is done through regional Education days and project-based learning showcases.

# NDCTE 2025-27 – One Time

## Virtual Reality Career Exploration

Licensing for CVXR for Middle and High School Students

Extended access to download fully immersive VR experiences for VR headsets and web-based

Licensing for CVXR for Elementary Students

Access to download fully immersive VR experiences for VR headsets

Next Step – Launch Elementary School Access within RUMReady.ND.gov

Integrate CareerViewXR experiences and related career cluster materials appropriate for elementary-level users into RUMReady.ND.gov.

## Autonomous Technology Grant

Signed grant agreement with TrainND NW

Continue to update training at the TrainND NW site

Partner with Area CTE Centers, to provide drone curriculum, education, and racing opportunities

# NDCTE 2025-27 – Secondary Grants

## **CTE Program Grants (\$48,337,653)**

Funding to support costs of high school and CTE Center program costs. Historically based on a percentage reimbursement, but a revised policy will be in place for the 2026-27 school year

## **Emerging Technology Grants (\$1,248,000)**

Supports the purchase, repair, and professional development for high-cost, high-tech equipment, which is rotated around consortium schools.

# NDCTE 2025-27 – Secondary Grants

## **STEM Matching and Innovation Grants (\$300,000)**

To encourage business and industry partners to participate in and contribute to STEM activities in K-12 education that innovates and infuses integrative STEM into existing or new programming.

## **Work-Based Learning Coordinator Grants (\$2,000,000)**

The intent of the grant funding is to offset the costs of a Work-Based Learning Program.

# NDCTE 2026-27– CTE Funding Policy

Annual funding allocations for each eligible recipient (School Districts and Career and Technical education Centers) will be based on:

1. Base Allocation - Each eligible recipient will receive a base allocation, proportional to the percentage of FTE involvement.
2. Performance Allocation - Programs that demonstrate a strong commitment to student success and workforce readiness by meeting the following performance targets, proportional to the percentage of FTE involvement, may qualify for additional funding:
  - a) CTE Concentrator Target: Meeting the Board-established target for CTE Concentrators (students who complete at least two credits in a coordinated plan of study).
  - b) Work-Based Learning Target: Meeting the Board-established work-based learning (WBL) participation targets, according to the guidelines defined in the WBL Guidance.

# NDCTE 2026-27– CTE Funding Policy

CTE Centers will receive additional funding based on access and operations factors, as outlined below:

1. Member Schools – The number of member school districts served, as identified in the Joint Powers Agreement.
2. Programs Offered – The number of unique programs provided by the CTE Center.
3. Student Enrollment – The number of student course enrollments, calculated based on course credits. An enrollment snapshot will be made no later than November 1st.
4. Flat rate per Center – Each Center will receive a flat rate to support the operations of the Center.

# Adult Farm Management Transition

The transition of Adult Farm Management from CTE to Ag was successfully completed July 1, 2025 without any disruptions to the program.

All stakeholders were engaged early with ongoing communication to help with expectations and alignment.

Inter-agency collaboration included:

- File and records transfer
- Staff coordination and training
- Transition communication

Overall, the transition was completed smoothly. Ag is now fully positioned to administer the program and uphold legislative intent.

# CTE Capital Projects Program

## 2021 Legislative Session

- \$88.3M for construction, renovation, maintenance and equipment for new and expanding CTE Centers and facilities
  - Preference provided for applications that foster cross district partnerships
  - Preference provided for applications involving Post-Secondary Partnerships
  - Preference provided for applications involving Workforce Training Partnerships
- 1-1 matching grant
- Grant range will be \$500,000 to \$10M

## 2023 Legislative Session – Project Inflationary Funding

- Additional \$26.5M – SIIF
- Additional \$6M – CCPF

# Bakken Area Skills Center – Watford City

## Program Areas Offered

- Agricultural Education
- Automation
- Automotive Technology
- Aviation
- Business
- Building Trades
- Engineering
- Family & Consumer Sciences
- Heavy Equipment Operator / CDL
- Health Sciences
- Information Technology
- Petroleum Technology
- Welding

Ten school districts included as partners.



**BASC**  
Bakken Area Skills Center

# Bismarck Career Academy - Silver Ranch - Bismarck

## Program Areas Offered

- Building Trades
  - Plans to move into HVAC, Plumbing, Electrical
- Agricultural Education

Multi School District Partnerships are in the works.



## Program Areas Offered

- Allied Health
- Agricultural Science and Precision Technology
- Automated Manufacturing
- Construction and Building Trades
- Diesel Technology
- Heavy Equipment
- Information Technology
- Welding Technology

Four school districts included as partners  
Strong NDSCS presence at the CIC



# Career Impact Academy – Grand Forks

## Program Areas Offered

- Agriculture
- Advanced Manufacturing
- Aviation - Aerospace and Unmanned Systems
- Automotive Services
- Building Trades
- Computer Science/Information Technology
- Culinary Arts
- Health Sciences
- Technology and Engineering

Eight school districts included as partners



# Heart River Area Career & Technology Center – Mandan

## Program Areas Offered

- Agricultural Education
- Building Trades
- Health Sciences
- Technology and Engineering
- Welding

Eleven school districts included as partners



# James Valley Area CTE Center – Jamestown – Expansion

## Program Areas Offered

- Agricultural Education
- Automotive Collision
- Automotive Technology
- Aviation
- Building Trades
- Business
- Culinary Arts
- Early Childhood Education
- Health Science Careers
- IT and Cybersecurity
- Machine Tooling and Welding
- Welding

Four school districts included as partners



*James Valley Career & Technology Center*

# Lake Area CTE Center – Devils Lake – Expansion

## Program Areas Offered

- Agricultural Education
- Automotive Technology
- Business Education
- Child and Family Services
- Construction
- Culinary Arts
- Health Sciences
- Marketing
- Welding

Five school districts included as partners



# Minot Area Workforce Academy - Minot

## Program Areas Offered

- Automotive Collision
- Automotive Technology
- Aviation
- Commercial Driver's License
- Construction Technology
- Early Childhood Education
- Health Sciences – Medical Careers
- Health Sciences – Biomedical
- Teaching Pathway

Four school districts included as partners



# North Valley Area CTC – Grafton – Expansion

## Program Areas Offered

- Agricultural Education
- Auto Technology
- Building Trades
- Business Education
- Commercial Driver's License
- Health Science Education
- Information Technology
- Marching Technology
- Marketing Education
- Welding Technology

Eight school districts included as partners



# Sheyenne Valley Area CTC – Valley City – Expansion

## Program Areas Offered

- Agricultural Education
- Automotive Technology
- Construction Technology
- Graphic Communication
- Health Sciences
- Information Technology Education
- Unmanned Aircraft Systems
- Welding

Four school districts included as partners



# Southeast Region CTC – Wahpeton – Expansion

## Program Areas Offered

- Agricultural Education
- Automotive Technology
- Diesel Technology
- Building Trades
- Business Education
- Family and Consumer Sciences
- Health Sciences Education/EMT
- Marketing Education/Cyber
- Restaurant Management
- Welding Technology

Thirteen school districts included as partners



# Southwest Area CTE Academy – Dickinson

## Program Areas Offered

- Agricultural Education
- Automotive Technology
- Building Trades
- Business Education
- Commercial Driver's License
- Culinary Arts
- Diesel Technology
- Drafting
- Family and Consumer Science
- Fire Fighting
- Health Sciences
- Heavy Equipment Operator
- Information Technology Education
- Law Enforcement
- Welding Technology

Seven school districts included as partners



# Williston Basin CTE Center - Williston

## Program Areas Offered

- Agricultural Education
- Automotive Technology
- Aviation Technology
- Building Trades
- Business Education
- Commercial Driver's License
- Culinary Arts
- EMT/Firefighter
- Family & Consumer Sciences Education
- Health Sciences Education
- Marketing Education
- Welding Education

Four school districts included as partners



# NDCTE – Office Relocation

Successful move completed August 26-27 to the Hughes Education Center

## Rent Costs:

Anticipated Monthly Rent in Capital - \$9,124.92

Current Monthly Rent - \$10,975 – Difference of \$1,850.08/month or \$44,401.92/Biennium

## Moving Expenses:

Movers - \$9,691.43

A/V Equipment Transfer - \$26,168.14

Furniture - \$46,573

Supplies - \$1407.02

Total - \$83,839.59

Total - \$128,241.51

Budget - \$300,000

**Thank you!!**

**Wayde Sick, State Director**  
**wasick@nd.gov**

