



North Dakota Legislative Council

Prepared by the Legislative Council staff
 LC# 27.9056.11000
 June 2026

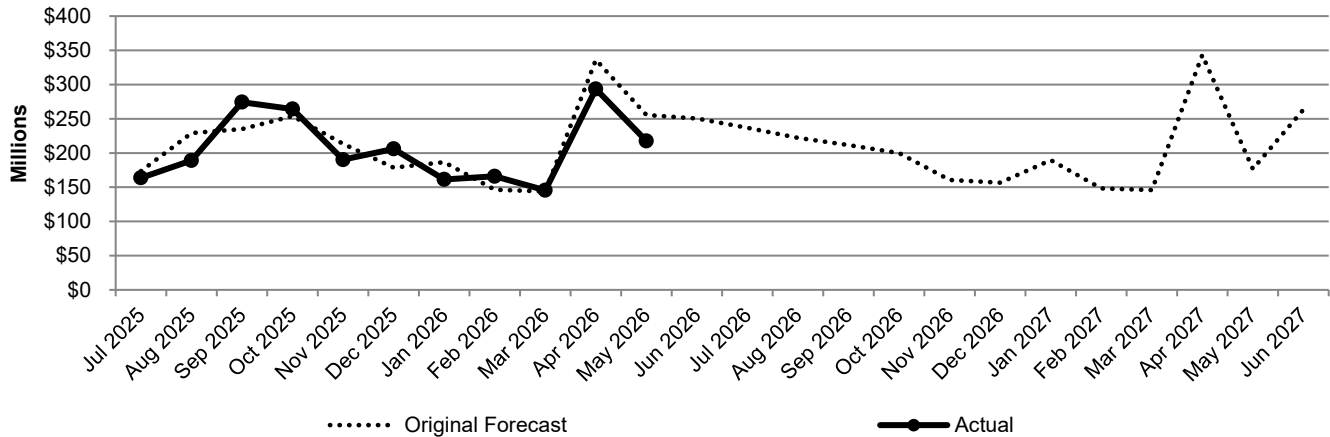
GENERAL FUND REVENUES MONTHLY UPDATE

SUMMARY

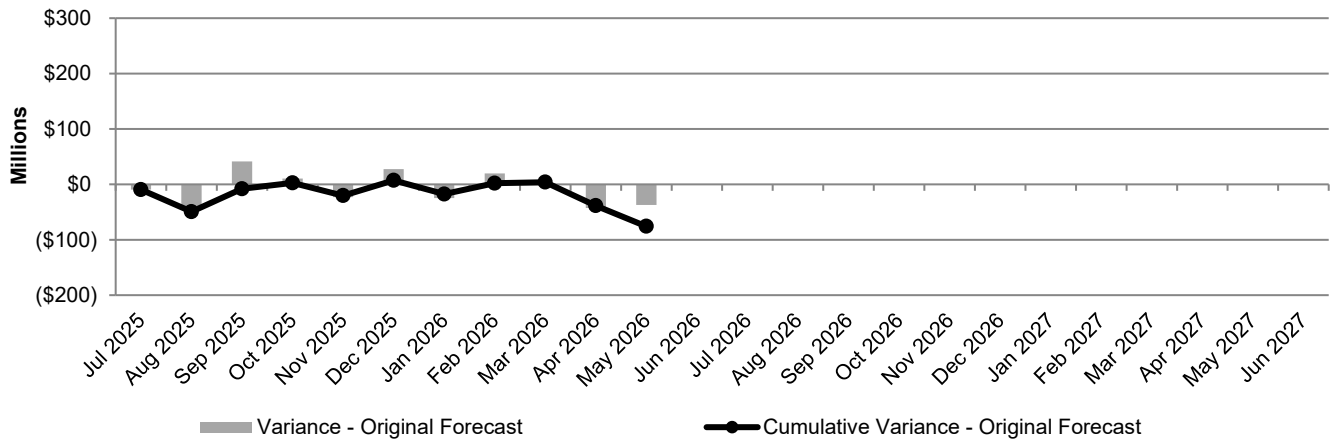
The schedule and charts below provide information on General Fund revenue collections for May 2026 and for the biennium to date based on actual collections and the 2025 legislative forecast ("original forecast").

	Original Forecast - Amounts Shown in Millions							
	May 2026				Biennium to Date			
	Actual	Forecast	Variance		Actual	Forecast	Variance	
		Amount	Percent			Amount	Percent	
Tax and fee revenues	\$217.58	\$255.43	(\$37.85)	(15%)	\$2,271.38	\$2,351.53	(\$80.15)	(3%)
Transfers and other sources	0.57	0.00	0.57	N/A	75.19	70.88	4.31	6%
Total General Fund revenues	\$218.15	\$255.43	(\$37.28)	(15%)	\$2,346.57	\$2,422.41	(\$75.84)	(3%)

TAX AND FEE REVENUES



TOTAL COLLECTIONS - VARIANCE TO FORECAST



COLLECTION DETAILS

The schedule below provides information on General Fund revenue collections for May 2026 and for the biennium to date based on actual collections and the 2025 legislative forecast ("original forecast"). The forecasted amounts for the oil and gas taxes have been adjusted to reflect the actual allocations, because the allocations are limited to \$500 million per biennium.

Original Forecast - Amounts Shown in Millions								
	May 2026				Biennium to Date			
	Actual	Forecast	Variance		Actual	Forecast	Variance	
			Amount	Percent			Amount	Percent
Tax and fee revenues								
Sales and use taxes	\$84.77	\$105.94	(\$21.17)	(20%)	\$1,146.68	\$1,156.09	(\$9.41)	(1%)
Motor vehicle excise tax	6.56	7.87	(1.31)	(17%)	72.92	79.42	(6.50)	(8%)
Individual income tax	18.11	35.11	(17.00)	(48%)	331.93	414.53	(82.60)	(20%)
Corporate income tax	4.50	4.66	(0.16)	(3%)	211.45	208.98	2.47	1%
Oil and gas taxes	82.80	82.80	0.00	0%	332.80	332.80	0.00	0%
Cigarette and tobacco tax	1.48	1.53	(0.05)	(3%)	16.96	18.38	(1.42)	(8%)
Wholesale liquor tax	0.94	0.86	0.08	9%	9.68	9.53	0.15	2%
Gaming tax	0.01	0.01	0.00	0%	0.27	0.28	(0.01)	(4%)
Insurance premium tax	9.81	9.35	0.46	5%	52.36	51.07	1.29	3%
Departmental collections	1.87	1.61	0.26	16%	20.35	20.94	(0.59)	(3%)
Interest income	4.17	2.79	1.38	49%	55.78	28.48	27.30	96%
Mineral leasing fees	2.56	2.90	(0.34)	(12%)	20.20	31.03	(10.83)	(35%)
Total tax and fee revenues	\$217.58	\$255.43	(\$37.85)	(15%)	\$2,271.38	\$2,351.53	(\$80.15)	(3%)
Transfers and other sources								
Bank of North Dakota profits	\$0.00	\$0.00	\$0.00	N/A	\$70.00	\$70.00	\$0.00	0%
Mill and Elevator Association profits	0.00	0.00	0.00	N/A	0.00	0.00	0.00	N/A
Lottery	0.00	0.00	0.00	N/A	0.00	0.00	0.00	N/A
Gas tax administration	0.00	0.00	0.00	N/A	0.88	0.88	0.00	0%
Budget Stabilization Fund (Interest)	0.00	0.00	0.00	N/A	0.00	0.00	0.00	N/A
Remaining transfers and other sources	0.57	0.00	0.57	N/A	4.31	0.00	4.31	N/A
Total transfers and other sources	\$0.57	\$0.00	\$0.57	N/A	\$75.19	\$70.88	\$4.31	6%
Total General Fund revenues	\$218.15	\$255.43	(\$37.28)	(15%)	\$2,346.57	\$2,422.41	(\$75.84)	(3%)